

# Alaska Department of Fish and Game

Habitat Section  
Southeast Region



## 114-27-10300 Braided Channel

## ADDITION

**Water body name:** Spasski Creek

**Survey date:** 6/15/2022

**Quad:** Juneau A-4

**Species & Lifestage:** CHp,COp,Pp,CTp,DVp,SHp

**Upper Reach Latitude:** 58.050314 **Longitude:** -135.290875

**Survey crew:** RR, FC

**Lower Reach Latitude:** 58.057129 **Longitude:** -135.293024

**Findings:** We surveyed this uncataloged braided channel using a backpack electrofisher and GPS. We captured juvenile coho salmon, Dolly Varden, and sculpin. This is a large, river-left braided channel of Spasski Creek, accounting for more than a half mile of anadromous fish stream (Table 1; Figures 1–3).

**Recommendations:** Add this uncataloged braided channel to the anadromous waters catalog for rearing coho salmon (Figure 4).

**Nomination:** Pending

Table 1.—114-27-10300 braided channel survey data.

Waypoint	Latitude	Longitude	Notes	Stream Width ft	Stream Substrate	Habitat Features	Gradient %	Sample Effort	Sample Results
751	58.053911	-135.292606	Start of survey on large braid of Spasski Creek. Channel with 1' incision; rootwads and fallen trees in stream.	15-20	Large Gravel Small Gravel	Cut Banks	2-4	EF	No Fish
752	58.053899	-135.293901	Didn't sample on this river-left tributary, water was very low and stream was disconnected. Would be good coho habitat during higher flow seasons.					Not Fished	
753	58.053575	-135.293110	Young-of-year CO capture.					EF	2 CO
754	58.053043	-135.291862	Some small braids on river-right.					EF	2 CO
755	58.051782	-135.291785	Continued CO capture.					EF	2 CO
756	58.051327	-135.291852	Stream has a lot of braiding, similar to these photos, throughout.					Not Fished	
757	58.051298	-135.291974	Tributary on river-left, looks like good coho habitat but none caught.	4-6	Small Gravel Sand		1-2	EF	1 SC 2 DV
758	58.051272	-135.291130	Waypoint for stream route.					Not Fished	
759	58.050692	-135.290536	Furthest downstream of three inlets on river-left of Spasski Creek that converge into one big braid.	20-25	Large Gravel Small Gravel		2-4	EF	No Fish

Table 1.—Continued.

Waypoint	Latitude	Longitude	Notes	Stream Width ft	Stream Substrate	Habitat Features	Gradient %	Sample Effort	Sample Results
764	58.050121	-135.291607	Start of survey heading back down the furthest upstream of three inlets on river-left of Spasski Creek. Somewhat disconnected at current flow; would likely be connected with good rearing habitat at higher flows.	4-6	Fine Organic		2-4	EF	No Fish
765	58.050391	-135.291662	Good rearing habitat.	4-6	Fine Organic Small Gravel	Incised Channel	1-2	EF	1 SC
766	58.050564	-135.291389	Furthest upstream and middle inlets converge here and join flow from furthest downstream inlet ~100-150' downstream. Young-of-year CO capture in middle inlet near this confluence.					EF	2 CO



Figure 1.—Juvenile coho salmon captured at waypoint 753.



Figure 2.—Channel at waypoint 755.



Figure 3.—Channel at waypoint 766.



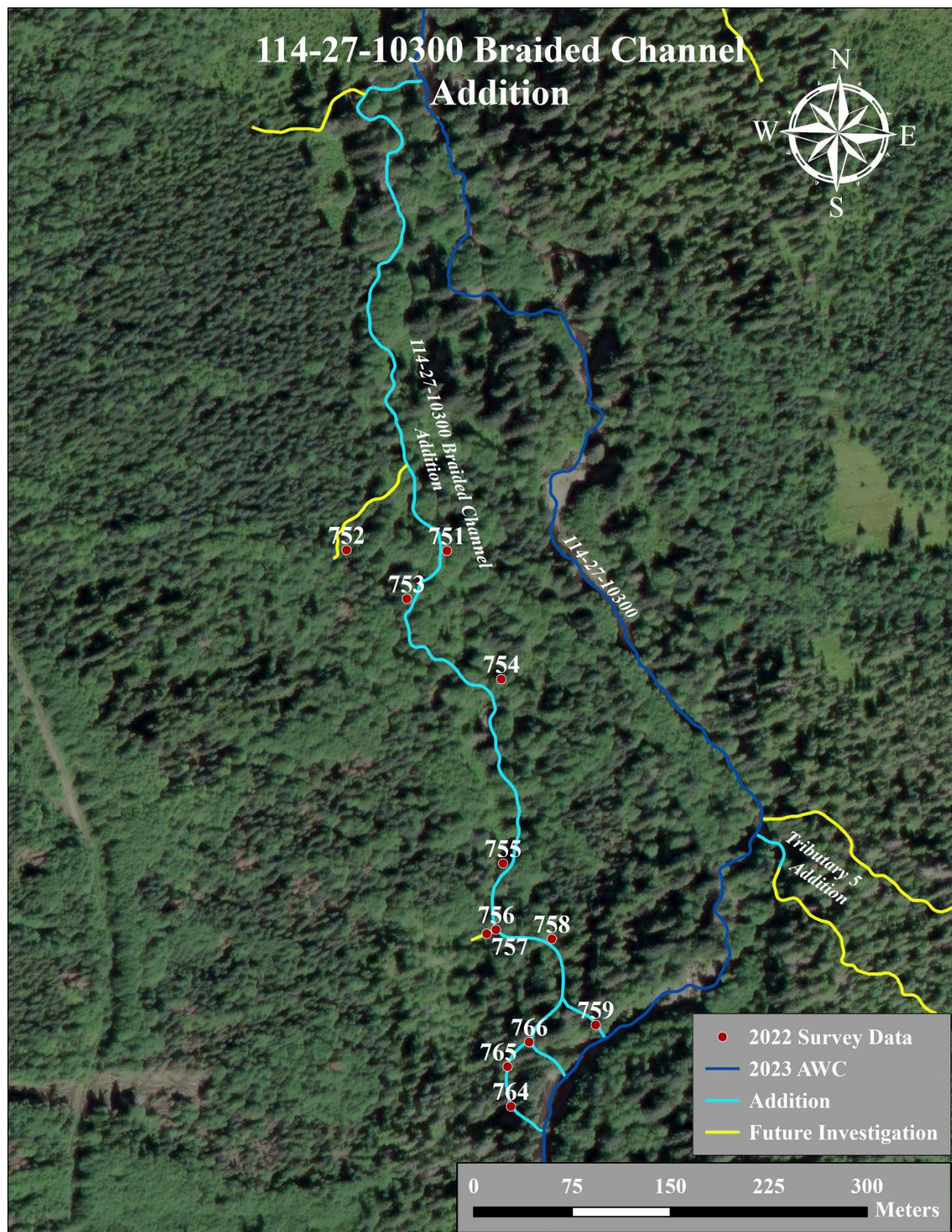


Figure 4.—114-27-10300 braided channel addition map.